

## DS4-QU/TW/DS4-QU/TW-PE

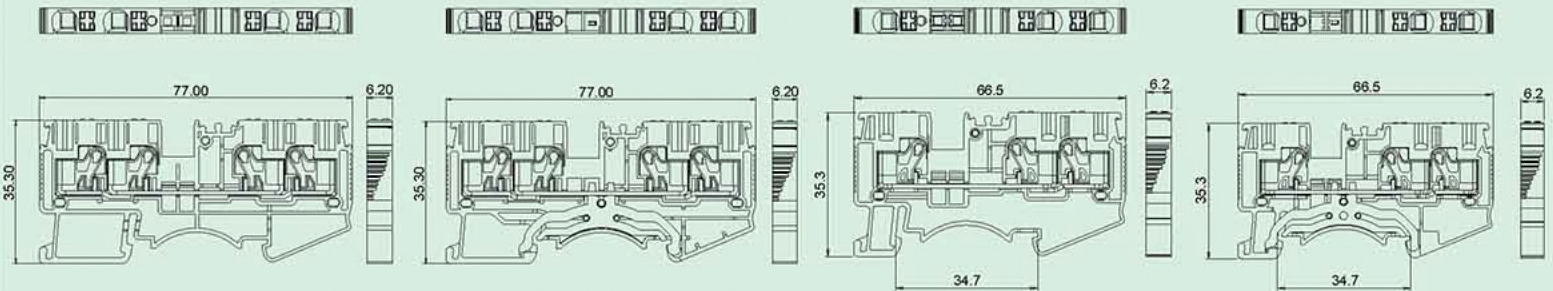
- PUSH IN 弹簧式二进一出的连接技术；
- 紧凑设计和正面接线使得可在密闭空间内进行接线；
- 可实现接地保护装置
- Push-in spring technology , two input and one output;
- Compact design and front entry make it possible for wiring in enclosed space.
- Protecting earth function is available.

### DS4-QU

### DS4-QU-PE

### DS4-TW

### DS4-TW-PE



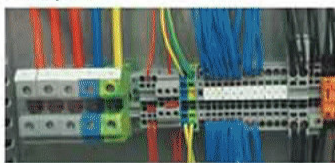
## 技术参数 Technical data

APPROVAL: CE

| 型号<br>Model | 线径<br>Wire range<br>(AWG/mm <sup>2</sup> ) | 线数<br>Poles | IEC60947技术参数 (IEC60947 data sheet) |                     | UL 1059技术参数 (UL1059 data sheet) |                     |
|-------------|--|-------------|------------------------------------|---------------------|---------------------------------|---------------------|
|             |  |             | 电压(V) Rated voltage                | 电流(A) Rated current | 电压(V) Rated voltage             | 电流(A) Rated current |
| DS4-QU      | 0.2-4&6(sol)/24-10                         | 01P         | 800                                | 32                  | 600                             | 28                  |
| DS4-QU-PE   | 0.2-4&6(sol)/24-10                         | 01P         | -                                  | -                   | -                               | -                   |
| DS4-TW      | 0.2-4&6(sol)/24-10                         | 01P         | 800                                | 32                  | 600                             | 28                  |
| DS4-TW-PE   | 0.2-4&6(sol)/24-10                         | 01P         | -                                  | -                   | -                               | -                   |

## 应用行业 Application

工业自动化、电梯、新能源、电力电气、仪器仪表、机械、轨道交通等行业  
industrial automation, elevator, new energy, electric power, instrument, machinery, railway transport.



## 产品包装方式 Packing

| Product model | Pcs./Pkt. |
|---------------|-----------|
| DS4-QU        | 50        |
| DS4-QU-PE     | 50        |
| DS4-TW        | 50        |
| DS4-TW-PE     | 50        |

## 附件 Accessory



## 型号对照 Cross reference

| DEGSON    | 同行1/Competitor1 | 同行2/Competitor2 |
|-----------|-----------------|-----------------|
| DS4-QU    | PT4-QUATTRO     | 2004-1407       |
| DS4-QU-PE | PT4-QUATTRO-PE  | 2004-1407       |
| DS4-TW    | PT4-TWIN        | 2004-1301       |
| DS4-TW-PE | PT4-TWIN-PE     | 2004-1403       |

## 产品订货 How to order

|            |             |   |   |   |   |                   |              |           |
|------------|-------------|---|---|---|---|-------------------|--------------|-----------|
| DS4-QU     | 0           | 1 | P | 1 | 1 | 0                 | 0            | A(H)      |
| Series NO. | NO. of pole |   |   |   |   | Standard          |              |           |
|            | 1           | 2 |   |   |   | 通用色 General Color |              |           |
|            |             |   | 1 |   |   | Grey              | PANTONE 430C | DEGSON 01 |