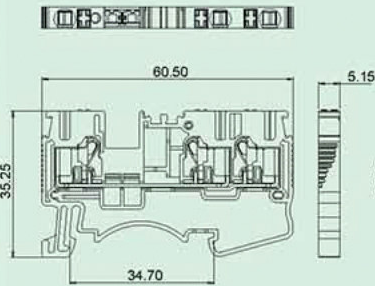


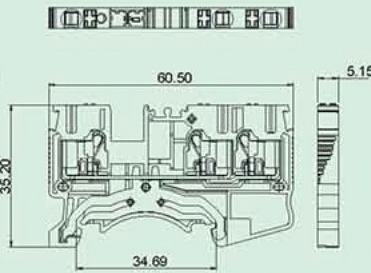
### DS2.5-QU/TW/DS2.5-QU/TW-PE

- PUSH IN 弹簧式二进一出的连接技术；
- 紧凑设计和正面接线使得可在密闭空间内进行接线；
- 可实现接地保护装置
- Push-in spring technology , two input and one output;
- Compact design and front entry make it possible for wiring in enclosed space.
- Protecting earth function is available.

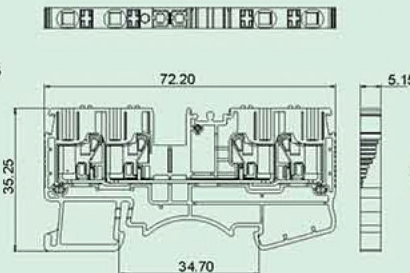
#### DS2.5-TW



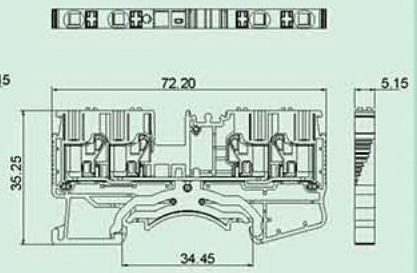
#### DS2.5-TW-PE



#### DS2.5-QU



#### DS2.5-QU-PE



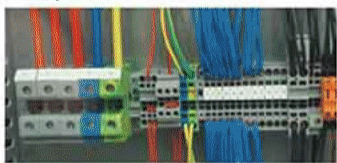
### 技术参数 Technical data

APPROVAL: CE

型号 Model	线径 Wire range (AWG/mm <sup>2</sup> )	线数 Poles	IEC60947技术参数 (IEC60947 data sheet)		UL1059技术参数 (UL1059 data sheet)	
			电压(V) Rated voltage	电流(A) Rated current	电压(V) Rated voltage	电流(A) Rated current
DS2.5-QU	0.2-2.5&4(sol)/28-12	01P	800	24	600	20
DS2.5-QU-PE	0.2-2.5&4(sol)/28-12	01P	-	-	-	-
DS2.5-TW	0.2-2.5&4(sol)/28-12	01P	800	24	600	20
DS2.5-TW-PE	0.2-2.5&4(sol)/28-12	01P	-	-	-	-

### 应用行业 Application

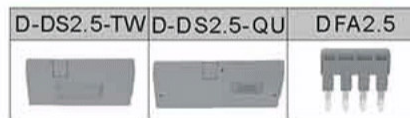
工业自动化、电梯、新能源、电力电气、仪器仪表、机械、轨道交通等行业  
 industrial automation, elevator, new energy, electric power, instrument, machinery, railway transport.



### 产品包装方式 Packing

Product model	Pcs/Pkt.
DS2.5-QU	50
DS2.5-QU-PE	50
DS2.5-TW	50
DS2.5-TW-PE	50

### 附件 Accessory



### 型号对照 Cross reference

DEGSON	同行1/Competitor1	同行2/Competitor2
DS2.5-QU	PT 2.5-QUATTRO	2002-1403
DS2.5-QU-PE	PT 2.5-QUATTRO-PE	2002-1407
DS2.5-TW	PT 2.5-TWIN	2002-1301
DS2.5-TW-PE	PT 2.5-TWIN-PE	2002-1307

### 产品订货 How to order

DS2.5-QU	-	0	1	P	-	1	1	-	0	0	A(H)
Series NO.		NO. of pole							Standard		
		1	2						General Color		
		1	2						Grey	PANTONE 430C	DEGSON 01